

# OM BACK

---

## BY OMSA<sup>®</sup>



## TONNEAU COVER



Designed with a distinctive waterproof leather-covered top, a sturdy 5 mm body profile, and hassle-free installation—no drilling required on your vehicle... Unrivaled Tonneau Cover



# OMBACK



Our double-sided drainage system keeps your cargo dry and clean by using dual discharge pipes that efficiently channel water and dust away before they can reach your luggage.

It features a two-stage opening system for ease of use.

Omback provides security with its independent locking system, ensuring a secure hold when in the closed position.

The disassembled design allows for space-efficient packaging.

Product Weight: 50 - 55 Kg

Non-destructive Installation

3 Years Warranty



"OMSA, the difference that you desire"

# FEATURES

Produced using CNC technology, Ombac offers exact fitment and minimizes the risk of assembly faults.



Stainless Steel



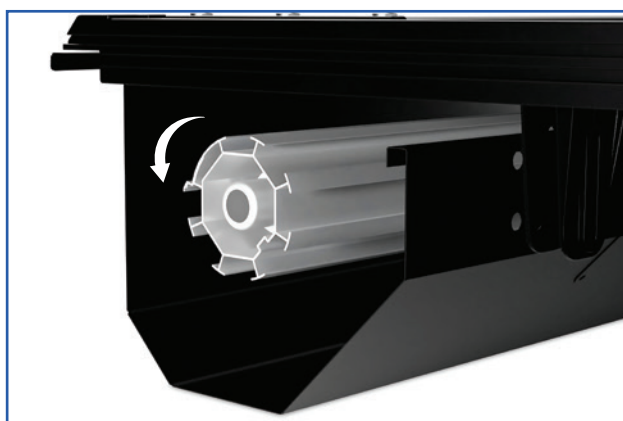
Water Proof



3 Years  
Warranty



Non-destructive  
Installation



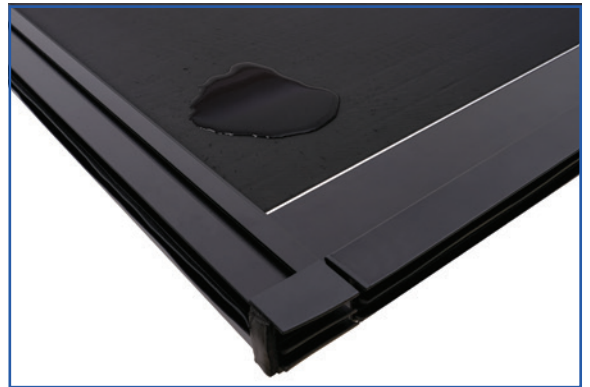
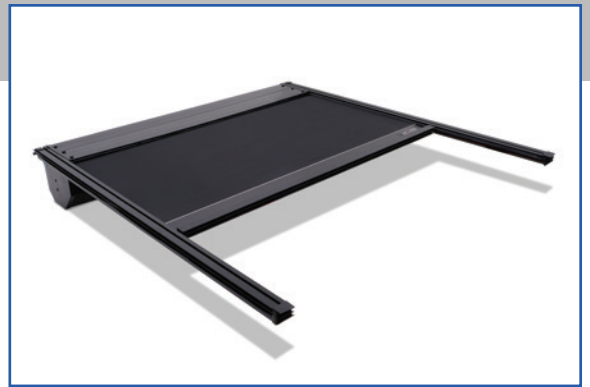
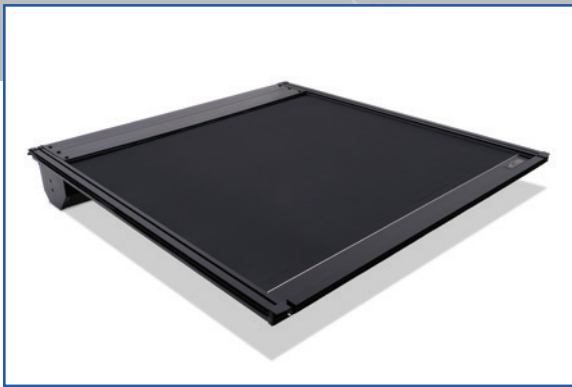
The mainspring inside the drum assists in smooth and easy opening of the product.



The case is made from reinforced 5 mm aluminum profiles, while the top surface is covered with specially produced artificial leather.

## OMSA LINE

NEW  
DESIGN



BY OMSA<sup>®</sup>



A close-up photograph of a vehicle's interior, focusing on the installation of a bumper. The bumper is made of corrugated metal and is being secured to the vehicle's chassis using several metal brackets and bolts. The brackets are mounted to the chassis without the need for drilling or cutting, demonstrating a non-destructive installation method. The lighting is dramatic, highlighting the metallic textures and the mechanical components.

# NON-DESTRUCTIVE INSTALLATION

Installation does not require any modifications to the vehicle body—no drilling, cutting, or screwing is needed. The bumper is assembled separately and then mounted onto the vehicle. Once positioned, it is securely fixed to the chassis using connection brackets.



# OMSA, the difference that you desire

## OMSALINE

Factory Address: DOSAB Menekşe Sk. No : 03 Osmangazi / BURSA / TURKEY

Email: [info@omsaline.com](mailto:info@omsaline.com) Tel: +90 (224) 444 66 72 Fax: + 90 ( 224 ) 261 16 61

Web : [www.omsaline.com](http://www.omsaline.com) Web Shop : [www.otoaksesuar.com](http://www.otoaksesuar.com)